



Principle of Operation

The ElectroPuls Pullrod Kit is a set of 4 different length pullrods suitable for fatigue, tension, compression, and torsion testing. The Pullrod kit optimizes compatible accessories for maximum range of operation when used on the latest ElectroPuls test instruments (except E1000) in combination with a 3119-605 chamber.

Features and Benefits

- Dynamic Linear Capacity: $\pm 10\text{kN}$ (± 2248 lbf)
- Dynamic Torque Capacity: Up to ± 100 Nm (± 885 in-lb)
- Suitable for linear and torsion, including full reverse-stress dynamic testing
- Includes thermal breaks to ensure no excessive thermal transfer occurs to sensitive components
- Optimized for the following accessories when used on new ElectroPuls test instruments (except E1000) with a 3119-605 chamber:
 - 2840-030
 - 2810-500
 - 2810-505
 - 2742-206

Specifications

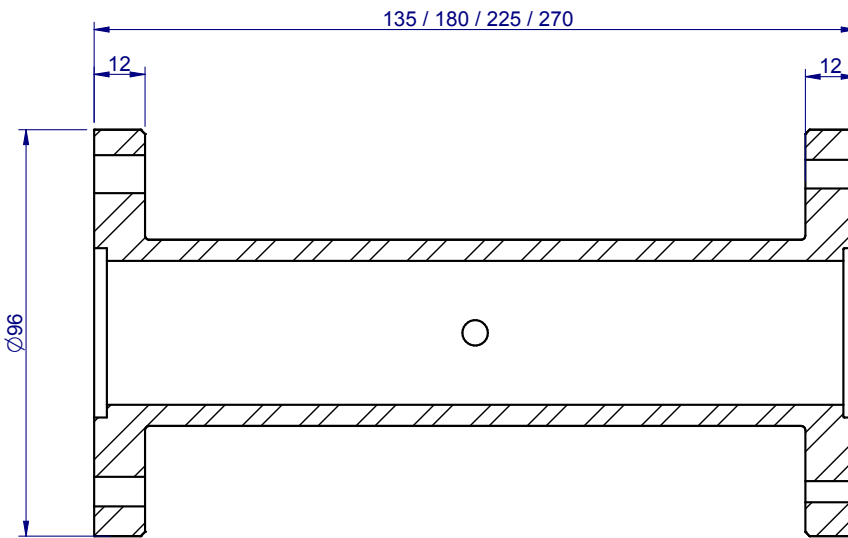
Maximum Force Capacity	kN	±10
	Lbf	±2248
Maximum Torque Capacity	Nm	±100
	lbs.in	±885
Mechanical Interface (Upper and Lower)		Flange Mount To suit 3×M6 or 3×M8 on 75 mm PCD
Temperature Range	°C	-80 to 350
	°F	-112 to 662
Pullrod 1 Details	mm	135
	in	5.3
	Kg	1.7
	lbs	3.75
Pullrod 2 Details	mm	180
	in	7
	Kg	1.9
	lbs	4.2
Pullrod 3 Details	mm	225
	in	8.8
	Kg	2.1
	lbs	4.65
Pullrod 4 Details	mm	270
	in	10.6
	Kg	2.3
	lbs	5.1
Static or Fatigue Rated		Fatigue



Pullrod with Mechanical Wedge Grip

Accessories

2840-030	10 kN Compression Platens
2810-500	3-Point Bend Fixture
2810-505	4-Point Bend Fixture Conversion Kit
2742-206	±3 kN ±25 Nm Linear-Torsion Mechanical Wedge-Action Grips



Pullrod with 3-Point Bend Fixture

www.instron.com



Worldwide Headquarters
825 University Ave, Norwood, MA 02062-2643, USA
Tel: +1 800 564 8378 or +1 781 575 5000

European Headquarters
Coronation Road, High Wycombe, Bucks HP12 3SY, UK
Tel: +44 1494 464646

Instron Industrial Products
900 Liberty Street, Grove City, PA 16127, USA
Tel: +1 724 458 9610