

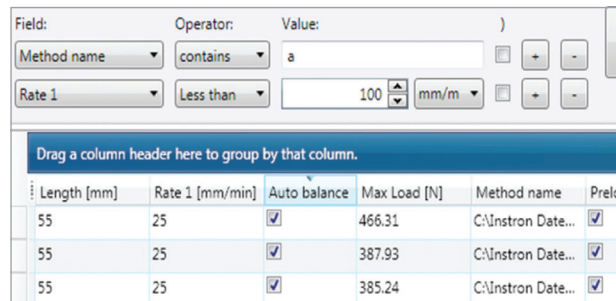


Jump-Start Your Data Analysis by Searching

With the TrendTracker Viewer you can search Bluehill test specimens based on a specimen property, test parameter, or a calculation result. No more file-searching and copy-paste.



- Quickly narrow down to the right dataset using multiple criteria in seconds
- Save your search definition and viewer settings for future use



Sort, Group, and Visualize Trends

Within the tabular view you can group the data by any column by simply dragging the column header to the grouping area. You can also apply descriptive statistics, like mean and standard deviation, to subgroups, as well as to the entire dataset.



Rapidly generate the right visualization for your data

Create control charts, like an Xbar-R or Xbar-S chart with right subsampling, and see how the product quality measures up against your specification limits.

An Xbar-R Chart with Control and Specification Limits

Further Analysis

Export the data to a CSV file and open it in an application, like Minitab, for further analysis.

What about Existing Data?

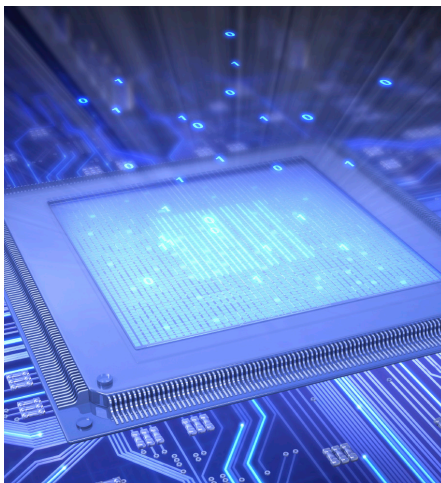
The TrendTracker plugin for Bluehill 3 and Bluehill universal includes a batch export utility to export all your existing results from Bluehill 3 and Universal sample files to the database, enabling you to take advantage of the archiving analysis capabilities from day one.



Bluehill® TrendTracker Plug-In

Using the Bluehill TrendTracker plugin, Bluehill 3 and Bluehill Universal Testing Software automatically exports various test parameters and results to a database at the end of every sample.

You can connect multiple Bluehill installations to the same database so that you can search for data across different machines or even different labs.



Database

At the heart of TrendTracker is a database built for the powerful Microsoft SQL Server* engine, a solid match for your growing data.

The data architecture has been designed for optimized storage space and retrieval speed.

Don't have a SQL Server?

TrendTracker also comes with an optional Express Edition of SQL Server that can host the database on a PC.

* Versions Supported: SQL Server 2008R2, 2012, 2014 and 2016.



Viewer

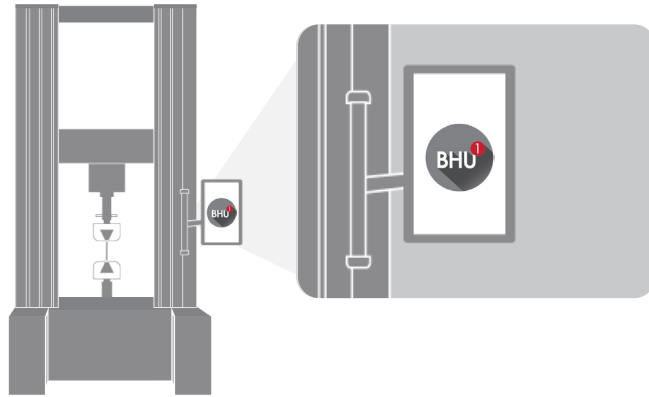
The TrendTracker Viewer provides an intuitive interface to search, display, and analyze results over time, and across multiple samples and test frames.

Using the Viewer, various users can access the database without installing Bluehill. You no longer have to deal with requests from your internal customers for results. Just give them a Viewer.

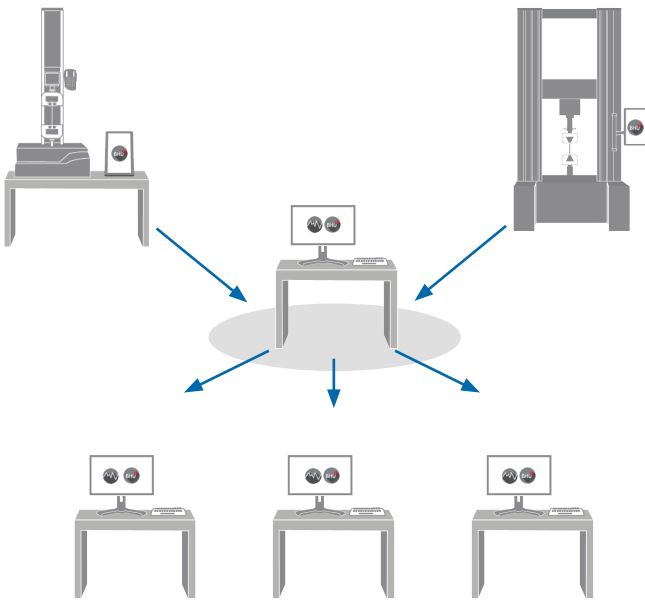
Database on Testing PC with Instron-Distributed SQL Server Express

The testing PC, where Instron® Bluehill® is installed, hosts the SQL Server (Express edition) and the database. The local Bluehill plugin is the only plugin that exports results to the Database. The TrendTracker Viewer needs to be installed on the same PC for data access.

The main disadvantage of this configuration is that users can only access the database from the testing PC.



Database on Non-Testing PC with Instron-Distributed SQL Server Express



A PC that is not connected to an Electromechanical System, but is accessible on the local network, hosts the SQL Server (Express edition) and the database.

This configuration is recommended when:

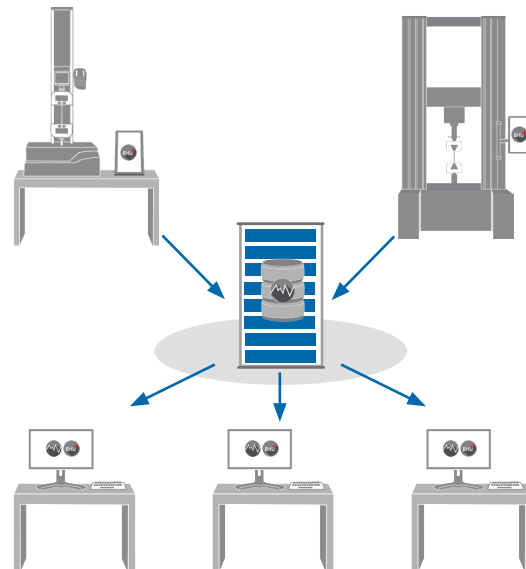
- Multiple systems need to export to the same database or multiple users need to access the results from the same database
- An existing IT SQL Server is not available
The scalability of this option is limited by the capabilities of the SQL Server Express edition and the host PC specifications.

Database on Existing SQL Server in IT Department

In this configuration, the database is hosted by an existing SQL Server maintained by the IT department and the testing PC's can be connected to the network.

The advantages of an IT-maintained server are:

- The database can be hosted on a standard or higher edition SQL Server that does not have the limitations that the Instron-distributed Express edition experiences
- The IT server machines are usually much more capable of handling multiple users than desktop computers
- Any backup and maintenance done for existing databases on the SQL Server is automatically extended to the TrendTracker database



www.instron.com



Worldwide Headquarters
825 University Ave, Norwood, MA 02062-2643, USA
Tel: +1 800 564 8378 or +1 781 575 5000

European Headquarters
Coronation Road, High Wycombe, Bucks HP12 3SY, UK
Tel: +44 1494 464646

Instron is a registered trademark of Illinois Tool Works Inc. (ITW). Other names, logos, icons and marks identifying Instron products and services referenced herein are trademarks of ITW and may not be used without the prior written permission of ITW. Other product and company names listed are trademarks or trade names of their respective companies. Copyright © 2017 Illinois Tool Works Inc. All rights reserved. All of the specifications shown in this document are subject to change without notice.