

The 5900 Series Multi Station systems offer enhanced throughput with their ability to perform simultaneous, independent tests on up to five (5) separate specimens using a single load frame. Based on our standard 5967 testing frame (30 kN capacity)\*, this system is especially suitable when expected test times are lengthened due to high elongation and return to gauge length or slow test speeds. If your test methods and expected results are similar for the specimens you are testing, this system is the ideal solution for cost-effective and efficient materials testing.

The pre-configured Multi Station system meets most test lab requirements for performing simultaneous tests. Depending on your workload, you can test one to five specimens at the same time. The system works seamlessly with Bluehill® 3 Software and has the ability to show all required transducer channels on live displays.

## System Components

- Extra-wide multi station frame with total load capacity (30 kN)
- Pneumatic routing configuration to support the use of 5 sets of pneumatic grips or other test fixtures
- Adaptors for mounting of grips, fixtures, and load cells to testing system

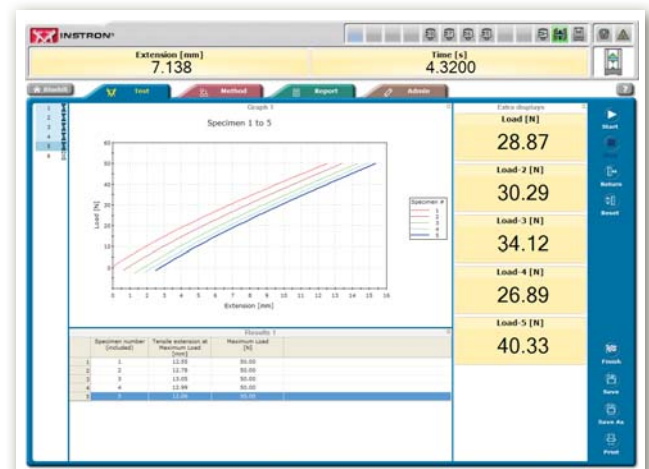
## Improve Efficiency and Increase Throughput of Your Facility

- Single load frame pre-configured with five load strings allowing simultaneous, independent testing on separate specimens
- Economical extra-wide frame design eliminates the need for several testing systems
- Convenient multiple test setup provides increased productivity
- Simultaneous and synchronized data logging
- Auto calibration on all channels
- Easy-to-use Bluehill 3 Test Control Software

\*Total capacity for all five loads; other capacities available upon request



Typical Multi Station System



Typical Bluehill 3 Screen with Multi Station Application

## Required Additional Components

- Dell® Premium Workstation PC
- SCM Expansion 8 channels to simultaneously capture up to 5 load and 5 strain channels in Bluehill® 3 Materials Testing Software
- Model 5900/5500A Sensor Conditioner Card
- Static Load cells
- Pneumatic side-acting grips or relevant test fixture
- Bluehill 3 Software with appropriate test application and Multi Station options

## Specifications

		Standard Height		Extra Height	
		CP108721	CP109658	CP109101	CP109114
Pitch Options		Narrow	Wide	Narrow	Wide
Available Horizontal Spacing per Load String	mm	140	165	140	165
	in	5.5	6.5	5.5	6.5
Total System/Load Capacity	kN	5 to 30 available <sup>1</sup>	5 to 30 available <sup>1</sup>	5 to 30 available <sup>1</sup>	5 to 30 available <sup>1</sup>
	lbs	1,125 to 6,750	1,125 to 6,750	1,125 to 6,750	1,125 to 6,750
Crosshead Travel (for 30 kN Frame)	mm	1,140	1,140	1,640	1,640
	in	44.9	44.9	64.6	64.6
Speed Range (for 30 kN Frame)	mm/min	0.001 to 1,016	0.001 to 1,016	0.001 to 1,016	0.001 to 1,016
	in/sec	0.00004 to 40	0.00004 to 40	0.00004 to 40	0.00004 to 40
Electrical Requirements		Single phase, 50/60Hz, 120 or 220 VAC	Single phase, 50/60Hz, 120 or 220 VAC	Single phase, 50/60Hz, 120 or 220 VAC	Single phase, 50/60Hz, 120 or 220 VAC
Overall System Dimensions	mm	1,278 x 850 x 1,615	1,278 x 850 x 1,615	1,278 x 850 x 2,115	1,278 x 850 x 2,115
	in	50.3 x 33.5 x 63.6	50.3 x 33.5 x 63.6	50.3 x 33.5 x 83.5	50.3 x 33.5 x 83.5
Pneumatic Grip Size(s) <sup>2</sup>	kN	1	1 or 2	1	1 or 2

Note: 1. Load capacity per station is the total system load capacity divided by the number of load stations being used. Only the center load station can accommodate full capacity; all other stations are rated to maximum of 10 kN (2,250 lbs).

2. Currently for use with grip models 2712-041 and 2712-042. Others will need to be evaluated upon request.

## Options

- 5-port environmental chamber with roller mount, providing temperatures from -40 to 200 °C. Requires narrow pitch frame option.
- Long Travel (XL) extensometer. Requires CP109659 support fixture to mount multiple extensometers.
- Support fixture for mounting up to five (5) XL extensometers to the Multi Station load frame. Requires wide-pitch frame option.
- For use with 1 or 2 kN pneumatic grips. Wide-pitch, Multi Station frame required for 2 kN grips. Wide or narrow-pitch frames required for 1 kN grips.
- Extra-height frame.

[www.instron.com](http://www.instron.com)



Worldwide Headquarters  
825 University Ave, Norwood, MA 02062-2643, USA  
Tel: +1 800 564 8378 or +1 781 575 5000

European Headquarters  
Coronation Road, High Wycombe, Bucks HP12 3SY, UK  
Tel: +44 1494 464646

Instron Industrial Products  
900 Liberty Street, Grove City, PA 16127, USA  
Tel: +1 724 458 9610