



2021 HARDNESS TESTING CATALOG

Equipment

Software

Test Blocks

Accessories



BUEHLER





Buehler Leads the Way in Hardness Testing

Over 80 Years of Industry Leadership

Founded in 1936 in the United States, Buehler has become one of the world's leading companies in the area of hardness testing - both in industrial development and production-related quality assurance and in academic research.

From Research to Industrial Use, Buehler Provides Reliable Solutions

With Reicherter, Wilson and Wolpert, Buehler combines the names of great innovators in the area of hardness testing under one roof. With this knowledge and experience, the company has grown into one of the world's leading suppliers of hardness testing equipment. In 2011, Wilson Hardness merged with Buehler to provide an even broader product offering.

Wilson Rockwell, Knoop/Vickers and Brinell hardness testers, along with the associated software, and a comprehensive range of accessories constitute the core of the company's current product portfolio. Buehler products and processes are used in quality assurance and in the development laboratories of major research facilities in numerous sectors, amongst them the aeronautical and aerospace, automotive, electrical, energy generation and medical equipment industries.

Globally located Buehler Solution Centers provide customers with the opportunity to directly work with the company's specialists. These Solution Centers are located throughout the United States, Asia, United Kingdom, France and in Germany. They are equipped with the most up-to-date technology for the preparation of materialographic specimens and with latest-generation of hardness testers, including the DiaMet™ testing software that is perfectly adapted to hardness testing. Experienced specialists take a hands-on approach to solving our customers' testing challenges.

Buehler is a strong, trusted partner relied upon by organizations for reliable solutions and consistent results in material preparation, testing and analysis.



TABLE OF CONTENTS

DiaMet™ Hardness Software	4	Brinell Hardness Testers	18
Vickers/Knoop Hardness Testers	6	Hardness Test Blocks	19
Universal Hardness Testers	12	Buehler Service	22
Rockwell Hardness Testers	14		



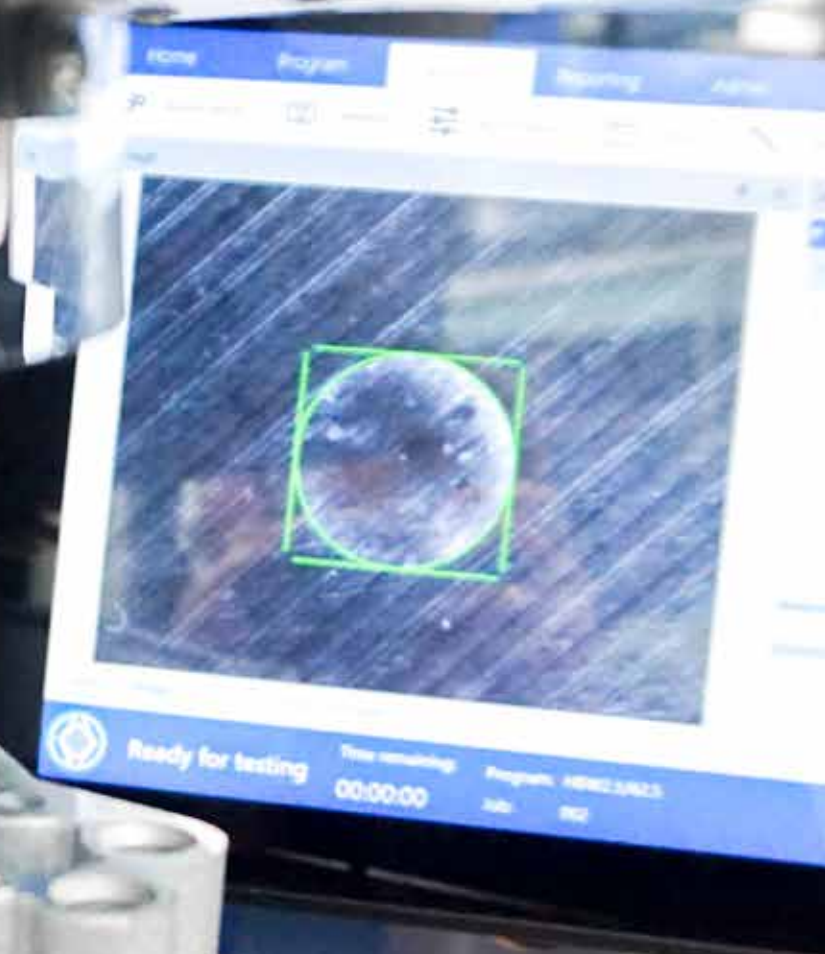
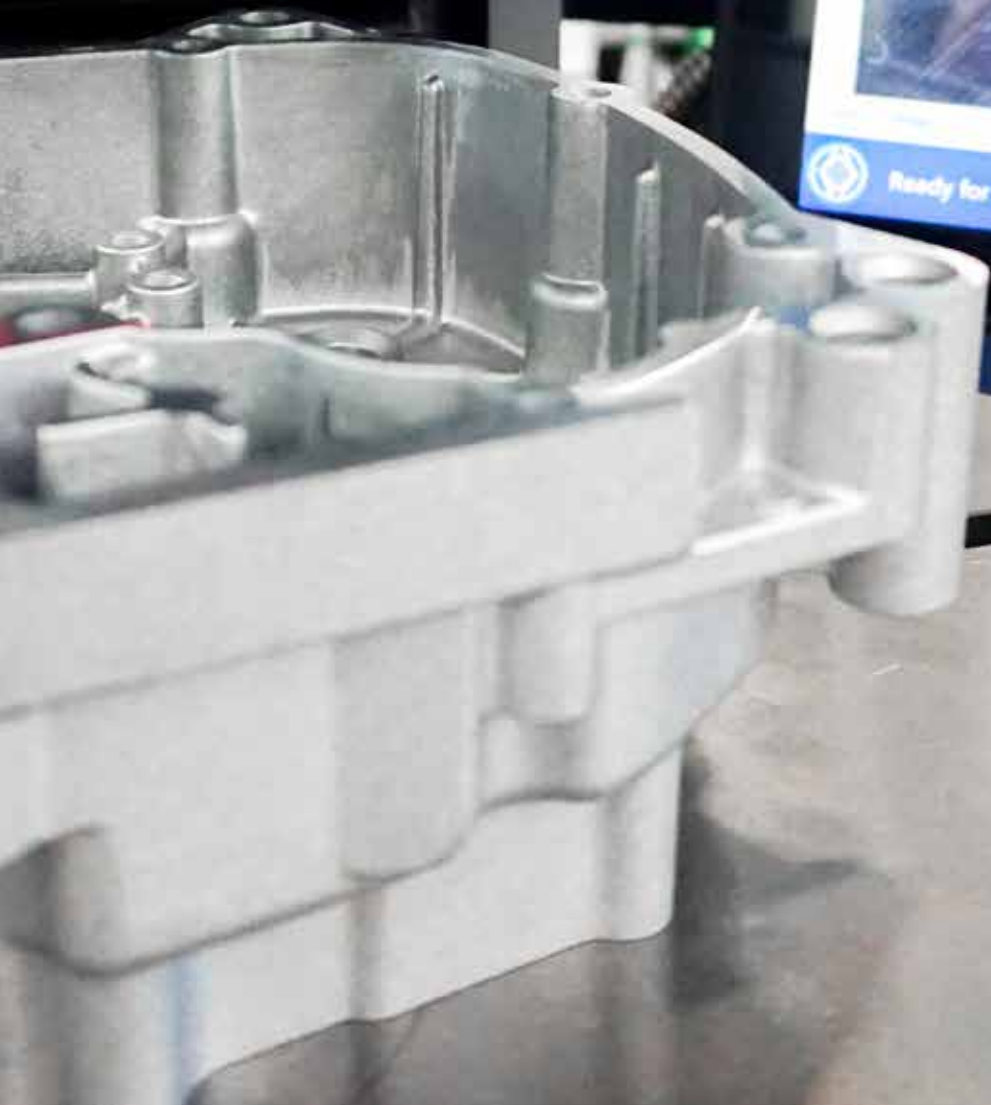
HARDNESS TESTING

Wilson® hardness testers include a comprehensive range of hardness testers from Rockwell®, Knoop, Vickers, and Brinell

Wilson® hardness testers include a comprehensive range of hardness testers from Rockwell®, Vickers-Knoop, and Brinell to fully automatic production systems. Our testers are complemented by a range of test blocks, accessories, and fixtures. Our calibration laboratory is recognized as the global leader in the production of premium test blocks and indenters.

Buehler Service Support is dedicated to ensure the highest quality calibration, verification, and service throughout the world and our Application Support combines years of experience with unparalleled expertise.







DiaMet™ Hardness Software

DiaMet - Hardness Testing Made Easy

Navigation within the DiaMet™ Software is made easy by its clean design and is supported by simple and intuitive gestures. Virtual tabs on top of the screen let you navigate between to Home, Program, Testing and Reporting. Comprehensive feedback is shown on the status bar, which makes interactions clear and efficient. Being designed for touch panel use, with an entirely new look and feel, DiaMet is simple, useful, and smart to work with! Easy To Operate by touch, mouse or keyboard. DiaMet Enterprise options let you Scan, Stitch and edge detect your sample to find exact locations where you can drop in pre-configured testing templates to speed up your operation.

Wilson® DiaMet™ Multisample



Easy sample holder setup

Select standard 4 or 6 fold sample holders or create your own

Define start coordinates

For each sample, the center or any needed X, Y or Z coordinate can be programmed and used for navigation or pattern placement

Perfect overview

When scanning the contour or the whole sample, it is displayed on the holder

Simple Stage Navigation

Click on the sample of the holder and move to the defined sample coordinates

Easy testing workflow

Clear your tested sample holder and start with the next batch of samples right away

DiaMet - Automation Packages

Automated Microindentation system available with different levels of automation. All control of the hardness instrument can be handled through comprehensive software. Automatically test and measure indentations, as well as set up and run automatic testing sequences and generate reports through export of data with minimal operator interaction. All parameters of the test, such as load monitoring, dwell times, and focusing are controlled through the software providing a very user friendly system. Hardness conversion into other scales is supported.

DiaMet Features

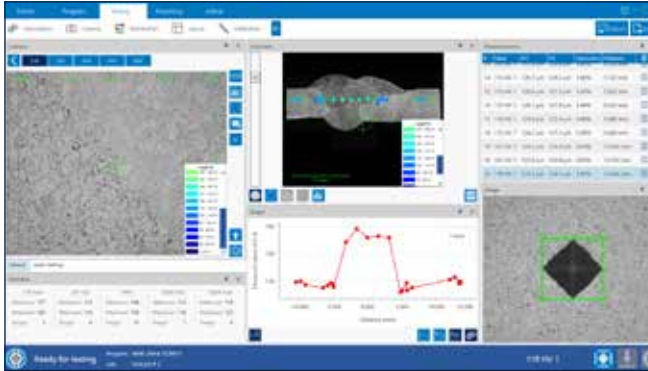
	Manual (Cam Only)	Basic	Semi-Automatic	Full-Automatic	Enterprise
Manual Indent Measure	●	●	●	●	●
Auto Indent Measure	●	●	●	●	●
Barcode Scanner Interface	●	●	●	●	●
Statistics, Reporting & Export tools	●	●	●	●	●
K1c Testing	●	●	●	●	●
Weld Testing	●	●	●	●	●
Auto-illumination		●	●	●	●
Digital zoom		●	●	●	●
Motorized XY-stage control			●	●	●
Multi Sample Testing				●	●
Auto-focus				●	●
Edge detection				●	●
Contour, Scanning & stitching					●
Hardness mapping					●
Specimen templates					●



DiaMet - Hardness Testing Functions

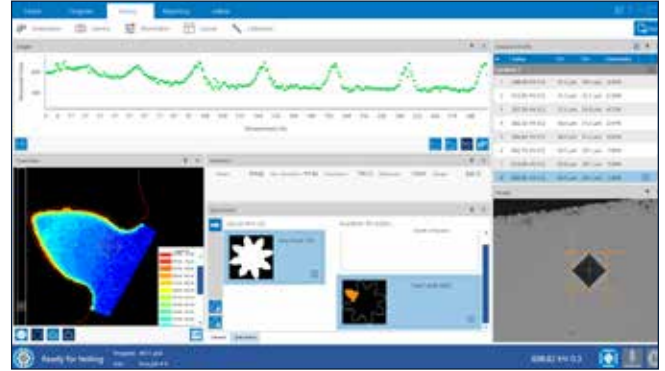
Weld Testing

Weld testing has never been easier. Use the intuitive weld pattern generator in the program section and align your pattern on each weld section within seconds.



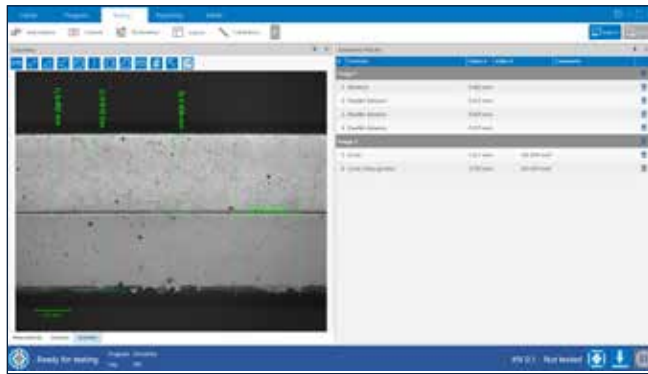
Color Mapping

Mapping gives an indication of the hardness distribution across a region of interest. Especially helpful for surface treated materials.



Geometric Functions

Basic measurements support you across the board of hardness testing. Make simple length or angle measurements, circle or area calculations with our geometry tool.



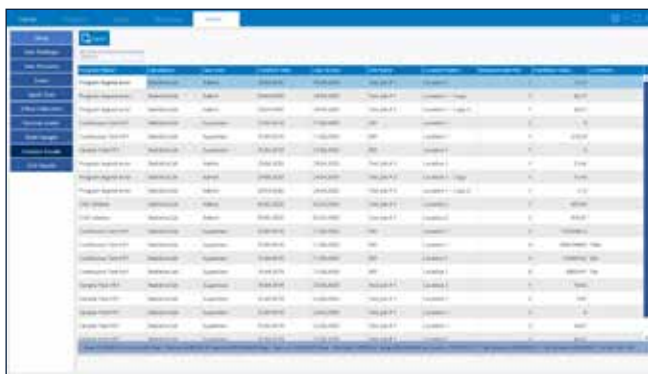
Results Trending

Trending of selection of testjobs of a specific program enables to track the process performance of customer samples/test programs



Database Query

Have access to the full database and search, filter and export your selection of interest.





Vickers Hardness Testers

Wilson® All-in-One VH3100

The best pre-configured full automatic Vickers hardness tester on the market. The All-in-One Wilson VH3100 has all you need for your production control hardness testing requirements. This setup is configured to easily perform hardness tests with advanced software solutions - DiaMet Enterprise.



Wilson All-in-One VH3100 - 125mm Vertical Capacity
Part Number - VH3100

Description	
Hardness scales	ISO and ASTM certified Vickers indenter
Loads	0.05 - 10kgf (0.49 - 98.07N)
Objectives	10x and 50x long working distance objective for measurements and navigation
Stage	Motorized 180x180mm stage (travel 110x140mm)
Overview camera	Bright field overview camera with 13x13mm FOV, for navigation, scanning or stitching
DiaMet Enterprise	All software features you need - including mapping, edge detection, scanning, stitching of overview image, CHD calculations, statistics, weld testing, exporting and barcode scanner interface
DiaMet workstation and monitor	High performance PC with 24" FullHD touchmonitor



Please select the correct sample holder by sample diameter or a clamping device.



Sample Holders and Accessories

A good sample holder keeps your specimen stationary and provides support during testing. Buehler sample holders also level tapered samples to ensure that the test surface is perfectly perpendicular to the indenter. This ensures an accurate and problem free execution of your test job.

Leveling Vise



Self leveling vise for one round mounted sample up to 40mm (requires additional insert), incl. magnets

886164

Self leveling vise for a single 50mm round mounted sample, no inserts applicable. Incl. magnets.

886167

4 Fold Leveling Vise



Self leveling vise for four round mounted samples up to 40mm (requires additional inserts). Incl. magnets.

886169

Self leveling vise for four 50mm round mounted sample, no inserts applicable. Incl. magnets.

886175

6 Fold Leveling Vise



Self leveling vise for six round mounted samples up to 40mm (requires additional inserts). Incl. magnets.

886178

Universal Leveling Vise



Universal clamping & leveling vise. Can be used to hold tapered pieces, wires and mounted samples.

900086323

EZ Clamp



Single mount canister

9100575 Canister (requires cap selection)

9100570 Mount Cap for 1in mounts

9100571 Mount Cap for 1.25in mounts

9100572 Mount Cap for 1.5in mounts

9100576 Mount Cap for 2in mounts

9100574 Magnetic Stop and Stage Mount

*Mount Cap requires the Canister

Sample Holder Insert



Sample holders 886164, 886169 and 886178 require one insert ring per slot.

886170

Ø 1in [25mm] insert

886171

Ø 30mm insert

886172

Ø 40mm insert

886173

Ø 1.25in insert

886174

Ø 1.5in insert

Precision Vise



Opening max 45mm

9100258

Anti-Vibration Table



Active anti-vibration table 600 x 600mm [24 x 24in]

9100906

Passive Platform



Passive Vibration Isolation Platform 18 x 24in [610 x 460mm]

9100904 for VH3300 and Rockwell Testers

9100905 for VH3100 and VH1000 series

For more sample holders and supports please contact our technical sales team.



Vickers-Knoop Hardness Testers

Wilson® VH3100-3300

The Wilson Fully Automated Hardness Testing System provides a fully integrated platform for your complete Vickers and Knoop hardness testing needs. From leading edge modular frame, stage, and optic designs to a fully featured User Interface, our VH3100 and VH3300 Testers can be built to meet your Application needs today, tomorrow, and into the future.



Ease of use

- Focus on a fast and simple operation to satisfy the needs of novice operators, while maintaining the flexibility and complexity of features required by expert users with DiaMet operation software.

Flexibility

- With a 6 position vertical turret (Buehler patent), the VH3300 offers the flexibility to configure the tester for the complete 0.01 - 50kgf (0.098 - 490.33N) load range or just a section of this.
- The zero-offset overview optics housed in the turret and is both illuminated and calibrated.
- Designed for Vickers testing to conform to international standards ASTM E384 & E92; ISO 6507, 9385, 4546.

Increase Up-time & Reduce Service Costs

- Collision Resistant System - prevents indenter or objective damage.
- All components and software are completely designed, manufactured and integrated by Buehler.

Dimensions 13.39in [340mm]W x 23.62in [600mm]D
Vertical Test Capacity - VH3100 choose:
 4.92in [125mm], 6.69in [170mm] or
 8.46in [215mm] VH3300 choose:
 4.1in [105mm] or 6.1in [155mm]
Horizontal Test Capacity - 9.23in [235mm]
Weight VH3100: 82.7 lbs [37.5kg]
 VH3300: 144lbs [65kg]

System Configurations

Start by selecting either the VH3100 or VH3300 and continue on to create a customized Vickers-Knoop Hardness tester

Main Unit



Wilson VH3100

- 3+1 position virtual turret
- 0.050 - 10kgf load range
- Includes DiaMet workstation and 24" monitor

W3111



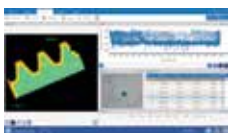
Wilson VH3300

- 3+3 position motorized turret
- 0.010 - 50kgf load range*
- Includes DiaMet workstation and 24" monitor

*depending on configuration

W3210

Software Options



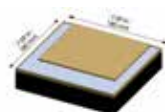
DiaMet Full-Automatic software package

W3100A03

DiaMet Enterprise software package

W3100A15

Motorized Stages



Standard size
 • 180 x 180mm
 W3000SS



Large size
 • 300 x 180mm
 W3000SL

Vickers-Knoop Hardness Testers



System Configurations *(Continued)*

Wilson VH3100

Wilson VH3300

Vertical Test Capacity



W3100D01 - height 125mm
 W3100D02 - height 170mm
 W3100D03 - height 215mm

W3200D01 - height 105mm
 W3200D02 - height 155mm

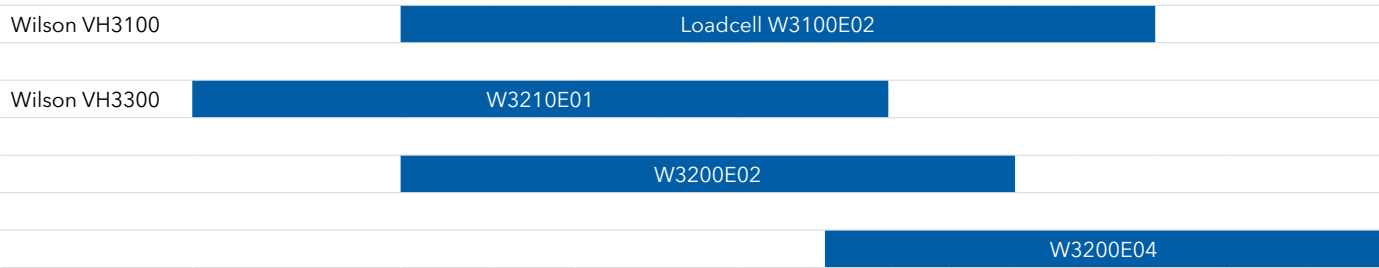
Load Cell

*select one for VH3100,
 select between one and
 three for VH3300*

W3100E02 - 100N loadcell

W3210E01 - 10N loadcell
 W3200E02 - 100N loadcell
 W3200E04 - 500N loadcell

Scales	HK0.01	HK0.025	HK0.05	HK0.1	HK0.2	HK0.3	HK0.5	HK1	HK2							
	HV0.01	HV0.025	HV0.05	HV0.1	HV0.2	HV0.3	HV0.5	HV1	HV2	HV3	HV5	HV10	HV20	HV30	HV50	



Overview Camera



- Separate overview camera
- Includes Scan & Stitch function in the DiaMet software

W3110F01

- Turret integrated overview
- Includes Scan & Stitch function in the DiaMet software

W3200F01

Additional Accessories

For Indenters select one Indenter per Load Cell.

For Long Working Distance Objectives select up to two for VH3100, select two or three for VH3300

Objectives	Indenter Holder*	Vickers Indenter	Knoop Indenter																					
	<p><i>*for VH3100 Only</i></p>																							
<table border="1"> <thead> <tr> <th>Part Number</th> <th>Native Mag.</th> <th>Max. Field of View</th> </tr> </thead> <tbody> <tr> <td>W5XLWDO</td> <td>5x</td> <td>3600µm</td> </tr> <tr> <td>W10XLWD</td> <td>10x</td> <td>1800µm</td> </tr> <tr> <td>W20XLWD</td> <td>20x</td> <td>900µm</td> </tr> <tr> <td>W40XLWD</td> <td>40x</td> <td>450µm</td> </tr> <tr> <td>W50XLWD</td> <td>50x</td> <td>360µm</td> </tr> <tr> <td>W100XLWD</td> <td>100x</td> <td>180µm</td> </tr> </tbody> </table>	Part Number	Native Mag.	Max. Field of View	W5XLWDO	5x	3600µm	W10XLWD	10x	1800µm	W20XLWD	20x	900µm	W40XLWD	40x	450µm	W50XLWD	50x	360µm	W100XLWD	100x	180µm	<p>Standard holder W3100G01</p> <p>SnapGrip Holder W3100G02</p>	<p>Vickers Indenter, ISO & ASTM Certified W9100687</p>	<p>Knoop Indenter, ISO & ASTM Certified W9100684</p>
Part Number	Native Mag.	Max. Field of View																						
W5XLWDO	5x	3600µm																						
W10XLWD	10x	1800µm																						
W20XLWD	20x	900µm																						
W40XLWD	40x	450µm																						
W50XLWD	50x	360µm																						
W100XLWD	100x	180µm																						



Vickers-Knoop Hardness Testers

Wilson® VH1102-1202

The VH1102 and VH1202 offer a versatile, affordable, and reliable solution for accurate micro-hardness testing, both for quality control and for metallurgical research applications. The VH1X02-series allows its operator to take measurements using the digital eyepiece in standalone mode or by using an optional integrated high-resolution camera and the powerful DiaMet™ software.

Best in Class Optics

- This high quality optical system, with proprietary components, provides an unparalleled image.
- The optional digital camera is integrated inside the housing, keeping it safe from dust and dirt as well as preventing it from getting misaligned.

Automatic Load Selection

- Designed for Vickers and Knoop testing to conform to international standards ISO 6507, ISO 4545 and ASTM E384
- The wide load range with 9 individual load steps, offer testing capabilities from 0.01 - 2kgf (0.098 - 19.61N)

VH1102 Standalone Tester

Part Number - W1102D01

Description	
Hardness scales	HV
Main-load	0.01 - 0.025 - 0.05 - 0.1 - 0.2 - 0.3 - 0.5 - 1 - 2kgf
Objectives	10x and 50x Long Working Distance
Sample Support	Flat anvil & manual XY Stage

VH1202 Standalone Tester

Part Number - W1202D01

Description	
Hardness scales	HV & HK
Main-load	0.01 - 0.025 - 0.05 - 0.1 - 0.2 - 0.3 - 0.5 - 1 - 2kgf
Objectives	5x, 10x and 50x Long Working Distance
Sample Support	Flat anvil & manual XY Stage



Dimensions

9.8in [250mm]W x 20.4in [520mm]D x 26.3in [670mm]H

Vertical Test Capacity - 5.1in [130mm]
with XY-stage 3.7in [95mm]

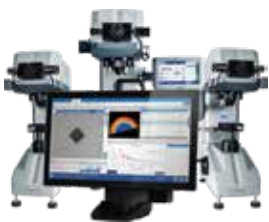
Horizontal Test Capacity - 5.1in [130mm]

Weight - 110lbs [50kg]



VH1102-1202 with DiaMet™ Automation Software

DiaMet workstation and 24" monitor included with VH1102-1202 Hardness Tester



Testers	DiaMet Basic Manual (Analog)	DiaMet Basic Manual (Digital)	DiaMet Semi Auto	DiaMet Full Auto	DiaMet Enterprise
VH1102 Vickers	W1102D31	W1102D33	W1102D35	W1102D37	W1102D45
VH1202 Vickers & Knoop	W1202D31	W1202D33	W1202D35	W1202D37	W1202D45

Vickers-Knoop Hardness Testers



Wilson® VH1150

The Wilson VH1150 is the ultimate evolution of the deadweight Vickers hardness tester with a unique load range, 0.3 - 50kgf (2.94 - 490.33N), combined in one machine. The automatic load selection eliminates the need for a hard to operate manual selector knob, and opens new possibilities in semi-automation applications. Functions like multi-scale conversion, shape correction and USB data export, make hardness testing easier and help you focus on your actual process control.

Experience the Flexibility of a Segment Leading Wide Load Range

- The manual load selector knob is replaced with a durable motor to change the loads automatically.
- The fast & quiet motorized turret is integrated as part of completely automatic test cycle. One push of the start button is all it takes.

Versatile

- Designed for Vickers, testing conforms to international standards ISO 6507 and ASTM E384.
- Segment leading load range - 0.3 - 50 kgf load range over ten individual load steps.

VH1150 Standalone Tester

Part Number - W1151D01

Description	
Hardness scales	HV
Main-load	0.3 - 0.5 - 1 - 2 - 3 - 5 - 10 - 20 - 30 - 50kgf
Objectives	10x and 20x Long Working Distance
Sample Support	Flat anvil & manual XY Stage



Dimensions

9in [230mm]W x 25in [625mm]D x 30in [760mm]H

Vertical Test Capacity - 8.2in [210mm] with standard flat anvil

Horizontal Test Capacity - 6.3in [160mm]

Weight - 154 lbs [70.5kg]

VH1150 with DiaMet™ Automation Software



DiaMet workstation and 24" monitor included with VH1150 Hardness Tester



Testers	DiaMet Basic Manual (Analog)	DiaMet Basic Manual (Digital)	DiaMet Semi Auto	DiaMet Full Auto	DiaMet Enterprise
VH1150	W1151D31	W1151D33	W1151D35	W1151D37	W1151D45

Accessories

Indenters for VH1102-1202-1150

- W9100687 Vickers indenter, includes ASTM & ISO certificate
- W9100684 Knoop indenter, includes ASTM & ISO certificate

Manual Stages

- 9170506 XY-stage with analog metric micrometers
- 9170507 XY-stage with digital micrometers

Objectives for VH1102-1202-1150

- W5XLWD 5x Long Working Distance objective
- W10XLWD 10x Long Working Distance objective
- W20XLWD 20x Long Working Distance objective
- W40XLWD 40x Long Working Distance objective
- W50XLWD 50x Long Working Distance objective
- W100XLWD 100x Long Working Distance objective



Universal Hardness Testers

Wilson® UH4000 Series

The UH4000 series universal hardness tester is designed for high volume production labs and production floor. It is available in two different configurations, the UH4250 and UH4750. Universal hardness testers are designed to perform several hardness scales with one machine, in most cases for higher loads (>5kgf). The UH4000 series testers contain all standardized and usual hardness testing methods between 0.5 - 250kgf (4,90 - 2451,66 N) and 3 - 750kgf (29,42 - 7354,99N), according to ISO 6506, 6507, 6508 and 4545 and ASTM E18, E10 & E92. Additionally, plastics and carbon testing can be performed according to ISO2039 and DIN51917.



Dimensions

28in [704mm]W x 21in [534mm]H x 39.2in [995mm]D

Maximum Specimen Height - 11.8in [300mm]

Test Stage Dimensions - T-slot stage with 12mm slot width, 11.8in [300mm] x 15.7in [400mm]

Weight - 660 lbs [300kg]

Ease of Use

- Focus on a fast and simple operation to satisfy the needs of novice operators, while maintaining the flexibility and complexity of features required by expert users with DiaMet operation software.

Flexibility

- The optional clamping tool will ensure stability during the test process.
- 8 position turret to have all objectives and indenters you need.
- Laser for easy test location targetting and a ringlight for best Brinell measurement accuracy

Increase Up-time & Reduce Service Costs

- Steel casting provides full protection for production environments.

System Configurations

Start by selecting either the UH4250 or UH4750 and continue on to create a customized Universal Hardness tester. The standard models UH4250 and UH4750 will be controlled by DiaMet Basic, including autofocus and automeasurement. The UH4250 Automation will be controlled by DiaMet Enterprise.

Main Unit



Wilson UH4250

- Load Range 0.5-250kgf, Standard Monitor 24" W4250
- Load Range 0.5-250kgf, Touchscreen 19.5" W4251



Wilson UH4750

- Load Range 3 - 750kgf, Standard Monitor 24" W4750
- Load Range 3 - 750kgf, Touchscreen 19.5" W4751



Wilson UH4250 Auto*

- Load Range 0.5- 250kgf, 24" Standard Monitor, 180 x 180mm motorized stage W4250XY
- Load Range 0.5-250kgf, 19.5" Touchscreen, 180x180mm motorized Stage W4251XY

* Clamping device W4100CL not applicable

Configure Turret

Select up to 8 different items



Objectives

- | | |
|----------|---|
| W4100X2 | 2.5x Objective, optional with Ringlight |
| W4100X5 | 5x Objective |
| W4100X10 | 10x Objective |
| W4100X20 | 20x Objective |
| W4100X40 | 40x Objective |
| W4100X50 | 50x Objective |



Laser

- | | |
|--------|-------------------|
| W4100L | Positioning Laser |
|--------|-------------------|

Indenters

- | | |
|-----------|--|
| W4100K | Knoop Indenter with turret adapter |
| W4100V | Vickers Indenter with turret adapter |
| W4100B1 | Brinell Indenter 1mm with turret adapter |
| W4100B2 | Brinell Indenter 2.5mm with turret adapter |
| W4100B5 | Brinell Indenter 5mm with turret adapter |
| W4100B10 | Brinell Indenter 10mm with turret adapter |
| W4100R120 | Rockwell Diamond Cone Indenter |
| W4100R16 | Rockwell Indenter 1/16" Ball |
| W4100R8 | Rockwell Indenter 1/8" Ball |
| W4100R4 | Rockwell Indenter 1/4" Ball |
| W4100R2 | Rockwell Indenter 1/2" Ball |



Additional Accessories

Ring Light



Ringlight for 2.5x objective (improves reading of soft Brinell indents)
W4100RL

Auto Clamping Device



The unique clamping device for the UH4000 series hardness testers ensures that workpieces will be fixed properly during testing. The device is designed to adapt different types of clamping forks.
Clamping width: 35mm [1.37in]
W4100CL

Workbench



Workbench with Drawers 1000 x 700 x 800mm [30 x 27 x 31in] with spindle hole
944872

Anvils

All anvils fit on testers with 25mm pinhole.



V anvil for max. 45mm diameter
cylindric workpieces
740096



V anvil for max. 85mm diameter
cylindric workpieces
740095



10mm spot anvil for small
workpieces
740160



Auto-leveling anvil Planoflex -
flat 60mm diameter
740587



Test anvil flat 80mm diameter
740191



Test anvil flat 190mm diameter
740101



Rockwell® Hardness Testers

Wilson® Rockwell® RH2150

The Wilson RH2150 hardness tester is designed for high volume production labs and production floor Rockwell testing, as well as supporting worldwide research facilities with its vast amount of testing scales with a maximum loadrange from 1 - 187.5 kgf (9.81 - 1838.7N) . The Wilson RH2150 is available in two different sizes, with a vertical capacity of 10 and 14 inch (254 and 356mm respectively). It is fully protected from outside influences with sheet metal casing and a loadcell protection. The intuitive user interface aligns with our DiaMet™ software - making it easy to use. A DiaMet™ package is available to have all advanced features of DiaMet.

Wilson® RH2150 Series Features

- Auto-stop clamping device holds down the sample and secures it during the testing.
- The adjustable LED workspace illumination highlights the test location to ensure clarity and full visibility.
- Indenter extensions are optionally available in several sizes to enable testing also on hard to reach test locations (only usable with clamping device)
- Standard 0.75 in(19mm) pin anvils are shared with the Wilson RB2000 and R574 testers to simplify accessories in a lab
- The operator panel can be adjusted on the frame or taken off completely to put aside the machine if needed - ensuring full flexibility and an ergonomic test process
- USB connection for easy data output to memory drives
- In conjunction with the clamping device, the external footswitch can be used in multiple ways:
 - clamping and manual start
 - clamping and automatic start
 - manual release after test
 - automatic release after test
- Rockwell Fast Mode, achieving test results in seconds



Dimensions

600 mm [28 in] × 350 mm [21 in] × 1260 mm [39.2 in]
(Size 1) or 1360mm [41.2in] (Size 2)

Vertical Test Capacity -

Size 1: 10in [254mm] or Size 2: 14in [356mm]

Weight - 125kg

Description

Available indenters	Rockwell: Rockwell diamond cone 120°, 1/16", 1/8", ¼", ½" carbide ball indenters, Brinell: 1mm, 2.5mm, 5mm and 10mm ball indenters
Rockwell test procedures ISO 6508-1, ASTM E18	A, B, C, D, E, F, G, H, K, L, M, P, R, S, V, 15N, 30N, 45N, 15T, 30T, 45T, 15W, 30W, 45W, 15X, 30X, 45X, 15Y, 30Y, 45Y
Plastic testing Ball indentation ISO 2039-1	HB5: 49N, 132N, 358N, 961N
Plastic testing Ball indentation ISO 2039-2	HRR, HRL, HRM, HRE
Rockwell carbon testing Ball indentation DIN 51917	HR2.5: 7, HR5: 7, 20, 40, 60, 100, 150, HR10: 20, 40, 60, 100, 150
Brinell depth testing (non-standardized) HBW-T	HBW-T2.5: 6.25, 15.625, 31.25, 62.5, 187.5, HBW-T5: 25, 62.5, 125, HBW-T10: 100



System Configurations

Select the Main Unit with the needed vertical capacity as well as the scales selection - regular or regular & superficial Rockwell scales.

Main Unit



Part Number	Description
W2101R	Size 1 - 10in [254mm] - with regular Rockwell scales, 10-187.5 kgf
W2102R	Size 2 - 14in [356mm] - with regular Rockwell scales, 10-187.5 kgf
W2101T	Size 1 - 10in [254mm] - with regular and superficial Rockwell scales, 1-187.5 kgf
W2102T	Size 2 - 14in [356mm] - with regular and superficial Rockwell scales, 1-187.5 kgf

Every tester includes a 63mm flat anvil, as well as a 1/16" ball indenter

Additional Accessories

Auto Clamping Device



Clamping device with auto-stop function, clamping force ca. 60kgf (130lbs)

W2100CL

Software Options



DiaMet basic software option, start test cycle by software and manage & export test data, program generation, statistics etc., incl. DiaMet workstation and 24" FullHD monitor

W1001R31

T-Slot Table



13.3in x 1in [340x280mm] T slot table, 12mm slot width, with bore pattern for spindle adaption

W2100C02

Indenter Extension



Indenter extension 2" [50mm], only in combination with clamping device W2100CL

W2100E2

Indenter extension 4" [100mm], only in combination with clamping device W2100CL

W2100E4

Indenter extension 6" [150mm], only in combination with clamping device W2100CL

W2100E6

Foot Switch



Footswitch for external test cycle start, intelligent trigger logic

W2100FS

Gooseneck Adapter

For internal testing on rings and tubes (excl. Indenters)



Max. internal reach diameter is 9.5mm
 Min inside diameter is 14mm
 Max. outside diameter with Min. inside diameter at Max. internal reach is 45mm
 Available Rockwell Diamond indenters are
 900001459 (A scale)
 900001460 (N scale)
 W2100G2



Max. internal reach diameter is 26mm
 Min inside diameter is 35mm
 Max. outside diameter with Min. inside diameter at Max. internal reach is 130mm
 Available Rockwell Diamond indenters are all standard Rockwell indenters (cf. Table)
 W2100G5



Rockwell® Hardness Testers

Wilson® Rockwell® 574

The 574 Series Rockwell Hardness Testers offer quality, durability, and an industry leading Gauge Repeatability and Reproducibility (GR&R) making this hardness testing instrument best in class. This system is available in Regular, Superficial or Twin Scale models and capable of testing in all of the regular and superficial Rockwell hardness scales and can accommodate a wide variety of applications.

Segment Leading GR&R Performance

- High precision depth measurement system for accurate and repeatable testing.
- Auto preload brake and automated main load test cycle ensure repeatability.

Ease of Use

- Powerful auto-braking system on preload ensures a seamless operation.
- Built in USB port offers rapid data transfer to Microsoft® Excel® or other applications.

Robust

- Proven robust design with all stainless steel internal components.

574R Regular - for all Regular test scales

Part Number - WH574R

Description	
Pre-load	10kgf (98.07N)
Main-load	60, 100, 150kgf (588.39, 980.67, 1471N)
Hardness scales	HRA, HRB, HRC, HRD, HRE, HRF, HRG, HRH, HRK, HRL, HRM, HRP, HRR, HRS, HRV

574T Twin - for all Regular and Superficial test scales

Part Number - WH574T

Description	
Pre-load	3, 10kgf (29.42, 98.07N)
Main-load	15, 30, 45, 60, 100, 150kgf (147.1, 294.19, 441.29, 588.39, 980.67, 1471N)
Hardness scales	HRA, HRB, HRC, HRD, HRE, HRF, HRG, HRH, HRK, HRL, HRM, HRP, HRR, HRS, HRV, 15N, 30N, 45N, 15T, 30T, 45T, 15W, 30W, 45W, 15X, 30X, 45X, 15Y, 30Y, 45Y



Dimensions

11.53in [292mm]W x 22.3in [566mm]D x 36.83in [934mm]H

Vertical Test Capacity - 11.43in [289mm] without accessories

Horizontal Test Capacity - 6.12in [155mm] at the bottom; 6.93in [175mm] at the top

Weight - 165 lbs [75kg]





Rockwell® Indenters

All indenters fit on Wilson legacy testers and R574, RH2150 and RB2000 testers. The indenter shaft length is 11,1mm and 6,34mm in diameter.



* C, D and A scales refer to regular Rockwell scales, N scales refer to superficial Rockwell scales
** WC = tungsten carbide

Part Number	Description
9100401	Rockwell indenter C scale , 120° diamond cone, ASTM certified
9100402	Rockwell indenter C, D, A, N scales, 120° diamond cone, ASTM certified
9100431	Rockwell indenter C, A, D scales, 120° diamond cone, ISO and ASTM certified
9100432	Rockwell indenter N scales, 120° diamond cone, ISO and ASTM certified
9100434	Rockwell indenter C,A,D,N scales, 120° diamond cone, ISO and ASTM certified
900003405	Rockwell indenter A scale for Carbides, 120° diamond cone, ASTM certified
900002015	Rockwell indenter N scale, 120° diamond cone, ASTM certified
9100405	Rockwell indenter 1/16" WC ball with 4 spare balls, ASTM, ISO and JIS certified
9100406	Rockwell indenter 1/8" WC ball with 4 spare balls, ASTM, ISO and JIS certified
9100407	Rockwell indenter 1/4" WC ball with 1 spare ball, ASTM, ISO and JIS certified
9100408	Rockwell indenter 1/2" WC ball with 1 spare ball, ASTM, ISO and JIS certified
9100422	1/16" Diameter WC Balls, 5 pcs, ASTM, ISO and JIS certified
9100423	1/8" Diameter WC Balls, 5 pcs, ASTM, ISO and JIS certified
9100424	1/4" Diameter WC Balls, 3 pcs, ASTM, ISO and JIS certified
9100425	1/2" Diameter WC Ball, 1 pcs, ASTM, ISO and JIS certified
W2100B2	Brinell indenter 2.5mm WC ball, ASTM, ISO and JIS certified
W2100B5	Brinell indenter 5mm WC ball, ASTM, ISO and JIS certified

Rockwell® Verification Kits

The kits contain recommended indenters and blocks for the dedicated scales.

Part Number	Description
A582143	Rockwell Regular Kit - includes Rockwell C Indenter, 25 HRC, 63 HRC and 80 HRB test blocks
A58239	Rockwell Superficial Kit - includes Rockwell N Indenter, 46 HR30N, 80 HR30N and 70 HR30T test blocks
A582144	Rockwell Twin Kit - includes Rockwell C and N Indenters, 25 HRC, 63 HRC, 80 HRB, 80 HR30N and 70 HR30T test blocks

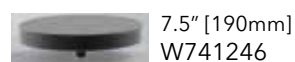
Rockwell® Anvils

All anvils fit on testers with 19mm pinhole.

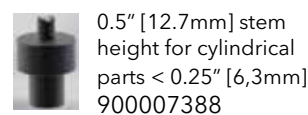
Flat anvil



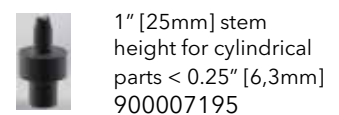
Flat anvil



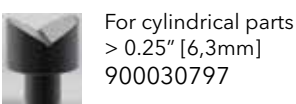
V Anvil Shallow



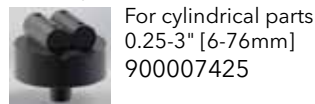
V Anvil Shallow



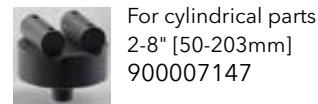
V Anvil Standard



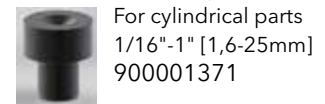
Anvil Cylindron Jr.



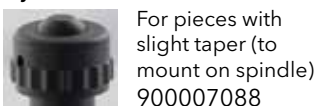
Anvil Cylindron



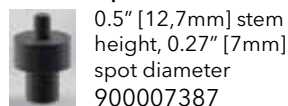
Anvil for Ball Testing



Eyeball Anvil



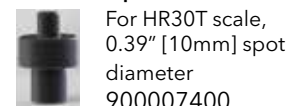
Pedestal spot Anvil



Pedestal spot Anvil



Diamond spot anvil





Brinell Hardness Testers

Wilson® BH3000

The BH3000 is a durable, 30 kN (3000 kgf) Brinell Hardness Tester ideal for wide range of Brinell loads from 62.5 kgf - 3000 kgf. Designed with rugged construction to withstand harsh environments, the BH3000 combines high rigidity and closed-loop load cell technology to ensure accurate and safe load applications. The standards are ISO 6506, ASTM E10, JIS.

Ease of use

- Heavy duty clamping and protection

Accuracy

- Closed-loop system for quick and highly accurate test results.
- Integrated hardness calculator and conversions.

Flexibility

- Wide load range 613N - 29.42 KN (62.5 kgf - 3000 kgf.).
- Deep reading microscope (order separately).

BH3000

Part Number: WH3000BH



Dimensions

10.4in [265mm]W x 23.9in [608mm]D x 39.5in [1000mm]H
Vertical Test Capacity - 11in [280mm]
Horizontal Test Capacity - 5in [130mm]
Weight - 550 lbs [250kg]

Description	
Hardness scales	HB
Main-load	62.5 - 3000kgf (612.92 - 29419.95N)

Accessories

WHSCOPE20X Brinell microscope 20X with LED light source	9110-122	Indenter 5mm Carbide Ball with certificate
WHSCOPE40X Brinell microscope 40X with LED light source	9110-121	Indenter 2.5mm Carbide Ball with certificate
WHSCOPE60X Brinell microscope 60X with LED light source	900000485*	10mm Carbide Ball with NVLAP certificate (Qty 2)
WHKINGSC4 King Scan IV - Computer Based Automatic Brinell Measurement System	900000595*	5mm Carbide Ball with NVLAP certificate (Qty 2)
9110-213 Testing table diameter 235mm	900007350*	10mm Ball Retainer, MJ, L, K, KDR, AP, & CLB3
9110-123 Indenter 10mm Carbide Ball with certificate		

**Products only available in North America & South America*



Item	Magnification	Field of View [mm]	Measuring Range [mm]	Direct reading [µm]	Height [mm]
WHSCOPE20X	20x	8	7	50	150
WHSCOPE40X	40x	5	4	20	155
WHSCOPE60X	60x	2,5	2	12,5	155



Wilson® Rockwell® Test Blocks

Wilson Hardness test blocks set the standard for the industry and are made from the highest quality material to insure the most uniform and repeatable blocks available. A comprehensive variety of scales and blocks are available to meet the wide ranges and hardness scales associated with Rockwell®, Brinell, Knoop and Vickers testing. All Wilson test blocks are calibrated in the Wilson Hardness Calibration Laboratory in Binghamton, NY. The Wilson lab is accredited to ISO-IEC 17025 by A2LA and the testers used in the calibration process undergo a stringent monitoring process using NIST traceable devices. For the ultimate accuracy and performance in tester verification, calibration sets are available for most Rockwell scales.

- We work directly with the steel and brass mills to specify the chemical composition
- Our machining processes (grinding, lapping, polishing) are all done in house, at the site of calibration
- 100% inspection to ensure that every single test block meets the physical requirements of ASTM (thickness, flatness, parallelism, surface roughness)

According to ASTM E18, ISO 6508-3 and JIS B 7730

	Part Number	Nominal Hardness
Rockwell A	9201110	63HRA
	9201150	73HRA
	9201190	83HRA
Rockwell B*	9202050W	40HRB
	9202060W	50HRB
	9202070W	60HRB
	9202080W	70HRB
	9202090W	80HRB
	9202100W	95HRB
Rockwell C	9203111	25HRC
	9203121	30HRC
	9203131	35HRC
	9203141	40HRC
	9203151	45HRC
	9203161	50HRC
	9203171	55HRC
	9203181	60HRC
	9203191	63HRC
Rockwell E*	9205010W	57HRE
	9205020W	63HRE
	9205050W	81HRE
	9205060W	87HRE
Rockwell F*	9206020W	63HRF
	9206050W	80HRF
	9206070W	91HRF



Block size: Ø 2.4 in x 0.35 in (Ø 60mm x 9mm)

	Part Number	Nominal Hardness
Superficial Rockwell 15-N	9212110	72HR15N
	9212150	83HR5N
	9212190	91HR15N
Superficial Rockwell 15-T*	9218020W	64HR15T
	9218050W	74HR15T
	9218070W	80HR15T
	9218090W	87HR15T
Superficial Rockwell 30-N	9213110	46HR30N
	9213130	55HR30N
	9213150	64HR30N
	9213190	80HR30N
Superficial Rockwell 30-T*	9219050W	43HR30T
	9219070W	56HR30T
	9219090W	70HR30T

• Certified using a Tungsten Carbide ball indenter

Special Order Items (not applicable in EU)

Part Number	Description
9201002	Special value - please provide hardness value and Rockwell scale
9201003	Special value with grid - please provide hardness value and Rockwell scale
9201006	API compliance - special tolerance - please provide hardness value and Rockwell scale



Wilson® Hardness Test Blocks

Wilson® Vickers-Knoop Test Blocks

According to ISO 6507 & ASTM E92 According to ASTM E92, ISO 6507-3 and JIS B 7735



Vickers Test Blocks

HV0.05	HV0.1	HV0.2	HV0.3	HV0.5	HV1	HV2	HV3	HV5	HV10	HV20	HV30	HV50	Value
930005-	93001-	93002-	93003-	93005-	93010-	93020-	93030-	93050-	93100-	93020-	93030-	93050-	150
930005-	93001-	93002-	93003-	93005-	93010-	93020-	93030-	93050-	93100-	93020-	93030-	93050-	200
930005-	93001-	93002-	93003-	93005-	93010-	93020-	93030-	93050-	93100-	93020-	93030-	93050-	250
930005-	93001-	93002-	93003-	93005-	93010-	93020-	93030-	93050-	93100-	93020-	93030-	93050-	300
930005-	93001-	93002-	93003-	93005-	93010-	93020-	93030-	93050-	93100-	93020-	93030-	93050-	350
930005-	93001-	93002-	93003-	93005-	93010-	93020-	93030-	93050-	93100-	93020-	93030-	93050-	400
930005-	93001-	93002-	93003-	93005-	93010-	93020-	93030-	93050-	93100-	93020-	93030-	93050-	450
930005-	93001-	93002-	93003-	93005-	93010-	93020-	93030-	93050-	93100-	93020-	93030-	93050-	500
930005-	93001-	93002-	93003-	93005-	93010-	93020-	93030-	93050-	93100-	93020-	93030-	93050-	550
930005-	93001-	93002-	93003-	93005-	93010-	93020-	93030-	93050-	93100-	93020-	93030-	93050-	600
930005-	93001-	93002-	93003-	93005-	93010-	93020-	93030-	93050-	93100-	93020-	93030-	93050-	700
930005-	93001-	93002-	93003-	93005-	93010-	93020-	93030-	93050-	93100-	93020-	93030-	93050-	775
930005-	93001-	93002-	93003-	93005-	93010-	93020-	93030-	93050-	93100-	93020-	93030-	93050-	830

Item number example: 93003700 for a 700 HV0.3 test block

The Hardness Values can deviate by +/- 25 HV from nominal value

not ISO 6507 due to <20µm diagonal length

Macro Vickers blocks (2.4in x 0.35in [60mm x 9mm])

Micro Vickers blocks (1.25in x 0.63in [32mm x 16mm])

Knoop Test Blocks

According to ASTM E92, ISO 4545-3 and JIS B 7734

Load (kg)	Part Number	Nominal Hardness	Range
HK0.5	94-005-225	225 HK	200-250
	94-005-315	315 HK	290-340
	94-005-440	440 HK	415-465
	94-005-540	540 HK	515-565
	94-005-630	630 HK	605-655
	94-005-730	730 HK	705-755
	94-005-850	850 HK	825-875

Special Order Items

Not applicable for Europe, please contact Buehler Europe

Part Number	Description
93-000-001*	Special block - please provide hardness value and Vickers scale
93-000-002*	Special block - please provide hardness value and Vickers scale
94-000-001*	Special block - please provide hardness value and Knoop scale
93-000-012*	Special block - 2 scales certification - please provide hardness value and Vickers/Knoop scale
93-000-013*	Special block - 3 scales certification - please provide hardness value and Vickers/Knoop scale
93-000-014*	Special block - 4 scales certification - please provide hardness value and Vickers/Knoop scale

*Specify hardness required and load force for calibration

•Specify additional load force for calibration





Wilson® Brinell Test Blocks

According to ISO 6507 & ASTM E92 According to ASTM E92, ISO 6507-3 and JIS B 7735

Brinell reference blocks up to 250kgf load Blocksize: Ø 2.4 in x 0.35 in (Ø 60mm x 9mm)

Nominal value	Range	HBW2.5-62.5 scale	HBW2.5-187.5 scale	HBW5-250 scale
140 HBW	115-169	WH-140HBW-625	WH-140HBW-1875	WH-140HBW-250
200 HBW	170-224	WH-200HBW-625	WH-200HBW-1875	WH-200HBW-250
250 HBW	225-274	WH-250HBW-625	WH-250HBW-1875	WH-250HBW-250
300 HBW	275-324	WH-300HBW-625	WH-300HBW-1875	
350 HBW	325-375	WH-350HBW-625	WH-350HBW-1875	
400 HBW	375-449		WH-400HBW-1875	
500 HBW	450-525		WH-500HBW-1875	



Brinell reference blocks up to 3000kgf load Block size: 6" x 4.5" (152 x 114 x 18mm)

Nominal value	Range	HBW5-750 scale	HBW10-3000 scale
140 HBW	115-169	WH-140HBW-750	WH-140HBW-3000
200 HBW	170-224	WH-200HBW-750	WH-200HBW-3000
225 HBW	212-238		WH-225HBW-3000
250 HBW	225-274	WH-250HBW-750	WH-250HBW-3000
275 HBW	262-288		WH-275HBW-3000
300 HBW	275-324	WH-300HBW-750	WH-300HBW-3000
325 HBW	312-338		WH-325HBW-3000
350 HBW	325-375	WH-350HBW-750	WH-350HBW-3000
375 HBW	362-388		WH-375HBW-3000
400 HBW	375-449	WH-400HBW-750	WH-400HBW-3000
500 HBW	450-525	WH-500HBW-750	WH-500HBW-3000

Other Brinell scales that use 1mm 2.5mm, 5mm or 10mm ball indenters †

not applicable for Europe, please contact Buehler Europe

Part Number	Description
WHSMLBRIN*	Special block - please provide hardness value and Brinell scale using 1mm or 2.5mm ball indenter

Part Number	Description
WHSPECBRIN*	Special block - please provide hardness value and Brinell scale using 5mm or 10mm ball indenter

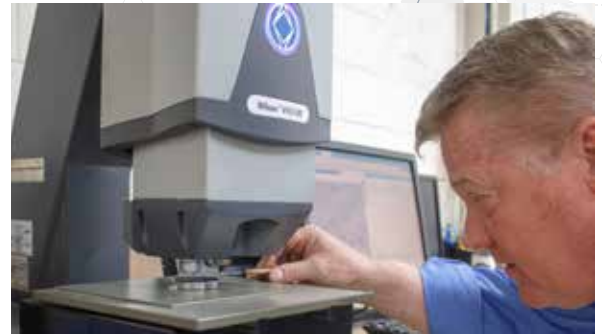
† Specify hardness required, load force, and ball indenter size for certification



See Test Block Guide for More Information
www.buehler.com/assets/Brochures/English/Hardness/FN01526_Test_Block_Guide_EN_Web.pdf



SERVICE



Our Global Service Teams are Committed to You

As a valued customer, we appreciate your partnership and are here to support you with repair services and spare parts under warranty and beyond. For regions covered by our distributor network, please contact your area distributor.



Reduce Unplanned Downtime

On-Site Repair Services

Buehler provides on-site or factory expert repairs performed by our certified technicians.

In-House Repair Services

Certified technicians will inspect and repair machines on-site or at one of Buehler's Global Service Facilities. Americas repairs are completed directly at Buehler's Headquarters in Lake Bluff, IL.



Ensure Consistent Results

Experienced Technicians

Technicians have collectively over 100 years of experience with average tenure of 10+ years with Buehler.

Compliance

Calibration services for hardness testers & microscopes according to ISO 17025. Accredited for direct or indirect verification.



Protect Your Investment

Genuine Spare Parts

Buehler supplies parts for all equipment, including obsolete machines for a minimum of 5 years after discontinuation.

Preventative Maintenance

Buehler offers on-site or factory inspection, cleaning and replacement of wear parts to ensure optimal performance.

BUEHLER Worldwide Headquarters

BUEHLER North and South America

41 Waukegan Road, Lake Bluff, Illinois 60044

P: +1 847 295 6500 | 800 BUEHLER (800 283 4537)

W: www.buehler.com | **E:** info@buehler.com

S: shop.buehler.com

European Headquarters

BUEHLER Germany - Esslingen

ITW Test & Measurement GmbH

P: +49 (0) 711 4904690-0

W: www.metallographie.biz | **E:** info.eu@buehler.com

S: www.metallographie.biz

BUEHLER France - Dardilly

P: +33 (0) 800 89 73 71

W: www.buehler.fr | **E:** info.eu@buehler.com

S: www.metallographie.fr

BUEHLER United Kingdom - Coventry

P: +44 (0) 800 707 6273

W: www.buehler.co.uk | **E:** info.eu@buehler.com

S: www.metallography.biz

Asia Headquarters

BUEHLER China - Shanghai

ITW Test & Measurement (Shanghai) Co., Ltd.

P: +86 400 111 8683 | **F:** +86 21 6410 6671

W: www.buehler.cn | **E:** info.cn@buehler.com

BUEHLER Asia-Pacific

P: +86 400 111 8683

E: info.asia@buehler.com

BUEHLER Japan

P: +81 03 5439 5077 | **F:** +81 03 3452 7220

W: www.buehler.jp | **E:** info.japan@buehler.com

Visit www.buehler.com for more information on a Buehler location near you.

